

GOVERNING THE FUTURE CITY:

A COMPARATIVE ANALYSIS OF GOVERNANCE INNOVATIONS IN LARGE-SCALE URBAN DEVELOPMENTS IN SHANGHAI, LONDON AND JOHANNESBURG

Motivations, key questions and objectives

- Investigate social innovations in the context of large-scale urban developments
 - Large proportion of urban development in different world regions is taking place in mega-urban projects
 - Important sites of experimentation (jurisdiction, long-term)
- What kind of urban political future is being put in place?
- Understand to what extent these innovations can contribute to more open, responsive governance of cities
 - Ask this question across three different cases with different political orders
 - Navigate tensions

Motivations, key questions and objectives

- Thinking about transnational methods
 - Comparative approach: Focus on individual cases (the particular, but also rooted in a transnational understanding)
 - Tie the threads, explore the linkages, bringing places into conversation
 - Commonalities and differences



(The Great Leap Upward: China's Pearl River Delta then and now – *The Guardian*, 10 May 2016)



(The Great Leap Upward: China's Pearl River Delta then and now – *The Guardian*, 10 May 2016)

Motivations, key questions and objectives

- Thinking about transnational methods
 - Comparative approach: Focus on individual cases (the particular, but also rooted in a transnational understanding)
 - Tie the threads, explore the linkages, bringing places into conversation
 - Commonalities and differences
- Action-research
 - Strong policy relevance
- 3 projects – different models of urban development yet similar challenges



LINGANG

SHANGHAI



(Source: Shanghai – new harbour City – Luchao <https://vimeo.com/7150008>, video from 2003)



Before.....



**Now, the Lingang New Town
315km²**

(PowerPoint Presentation Lingang Overview:
Facts and questions, Xiang Luo – 24 April 2016)

Industry: 240.99km²

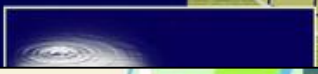
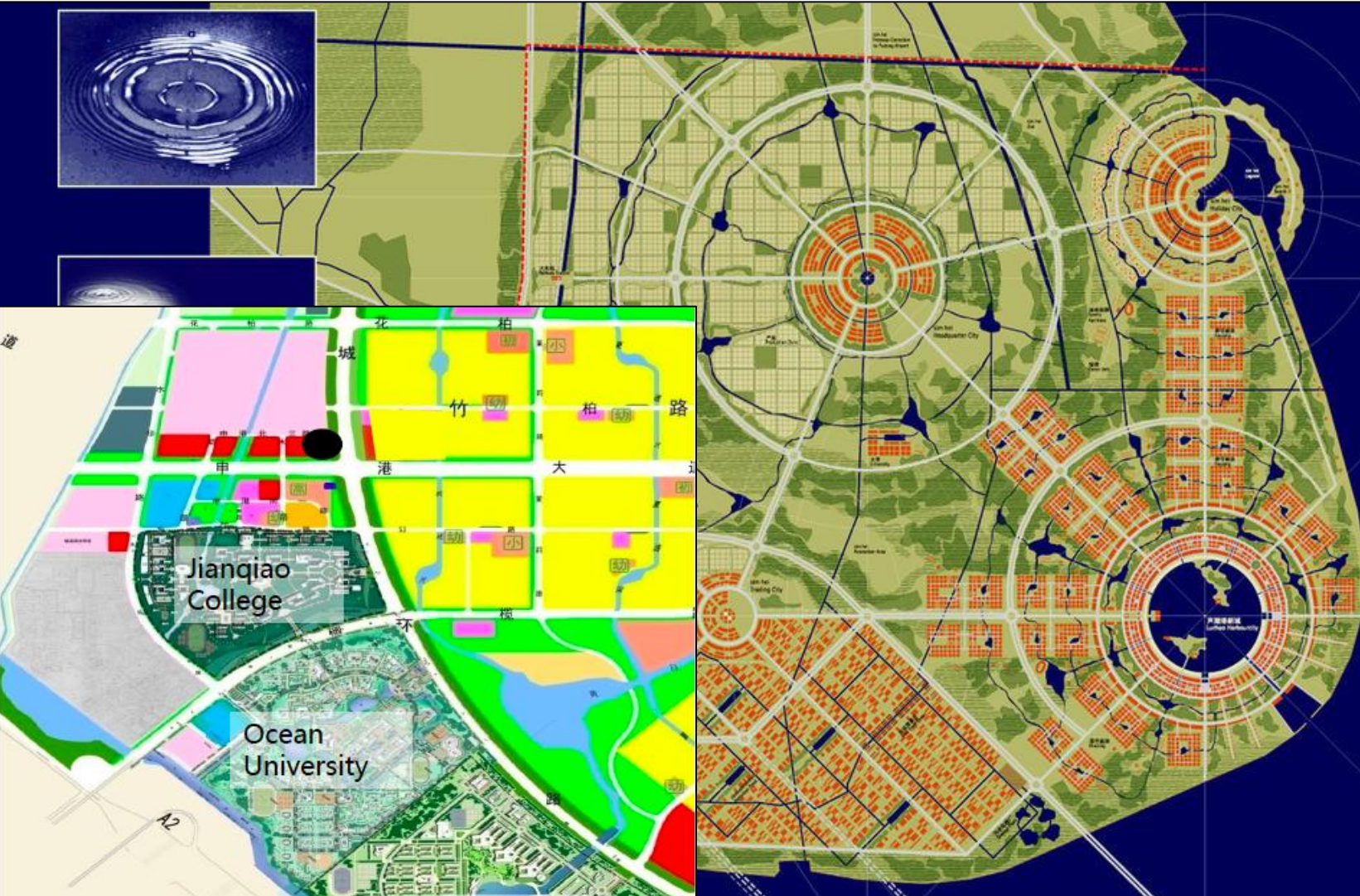
Town : 67.76km²

Total : 315.38km²

Industry: 240.99km²

Town : 67.76km²

总体规划
MASTERPLAN
1:25,000





OLD OAK AND PARK ROYAL

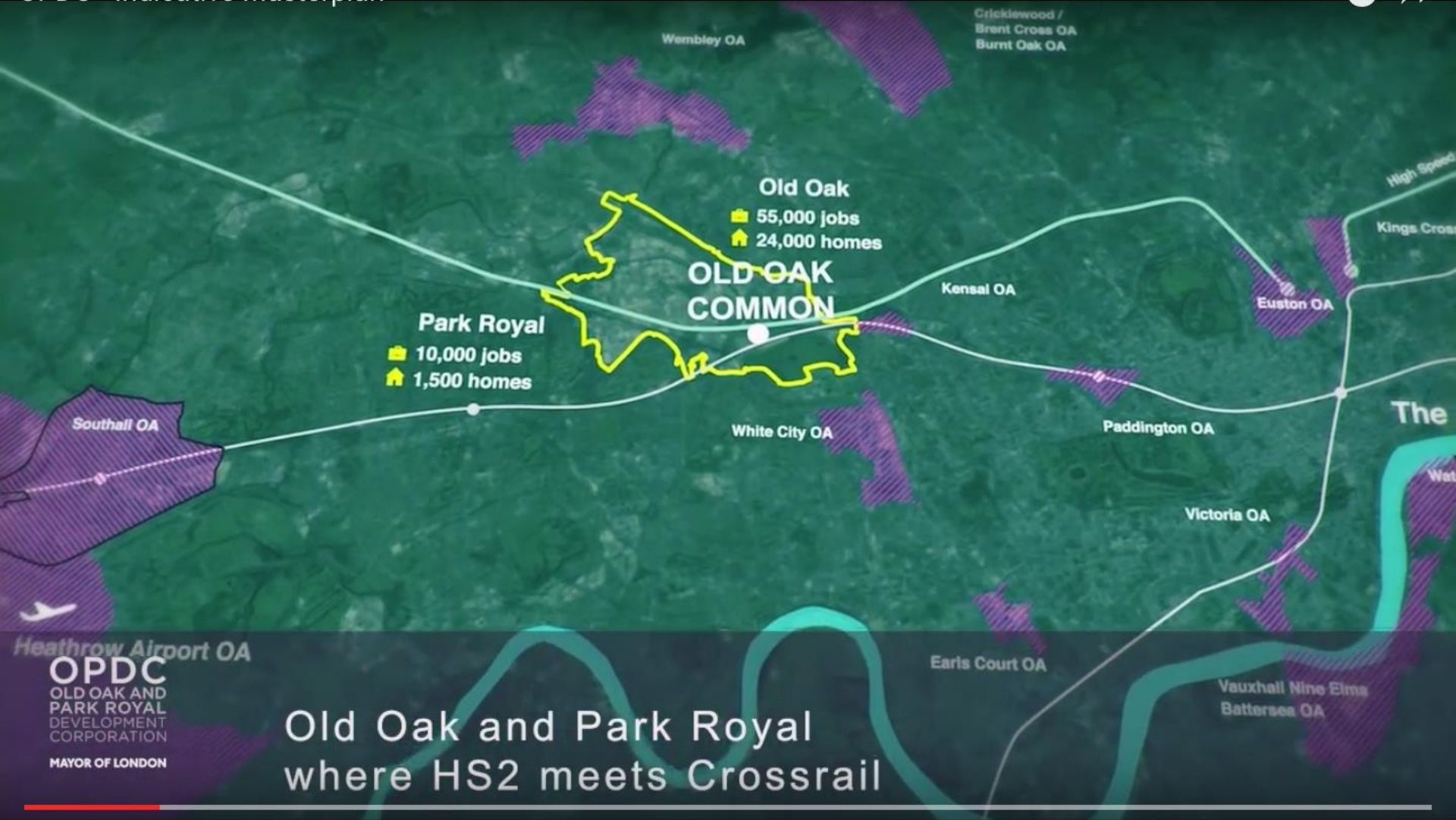
LONDON



(Source: Old Oak and Park Royal Corporation, www.youtube.com/watch?v=PuorrYi_VMs, uploaded on 15 Jan 2016)



OPDC - Indicative Masterplan



OPDC
OLD OAK AND
PARK ROYAL
DEVELOPMENT
CORPORATION
MAYOR OF LONDON

Old Oak and Park Royal where HS2 meets Crossrail

0:20 / 3:30

HD

(Source: Old Oak and Park Royal Corporation, www.youtube.com/watch?v=PuorrYi_VMs, uploaded on 15 Jan 2016)

OPDC - Indicative Masterplan



OPDC
OLD OAK AND
PARK ROYAL
DEVELOPMENT
CORPORATION
MAYOR OF LONDON

Old Oak station - 250,000 daily commuters

▶ ⏪ 🔊 1:08 / 3:30

⚙️ HD 🗄️

(Source: Old Oak and Park Royal Corporation, www.youtube.com/watch?v=PuorrYi_VMs, uploaded on 15 Jan 2016)

OPDC - Indicative Masterplan



▶ ⏪ 🔊 1:16 / 3:30

🔧 HD 🗄

(Source: Old Oak and Park Royal Corporation, www.youtube.com/watch?v=PuorrYi_VMs, uploaded on 15 Jan 2016)

OPDC - Indicative Masterplan

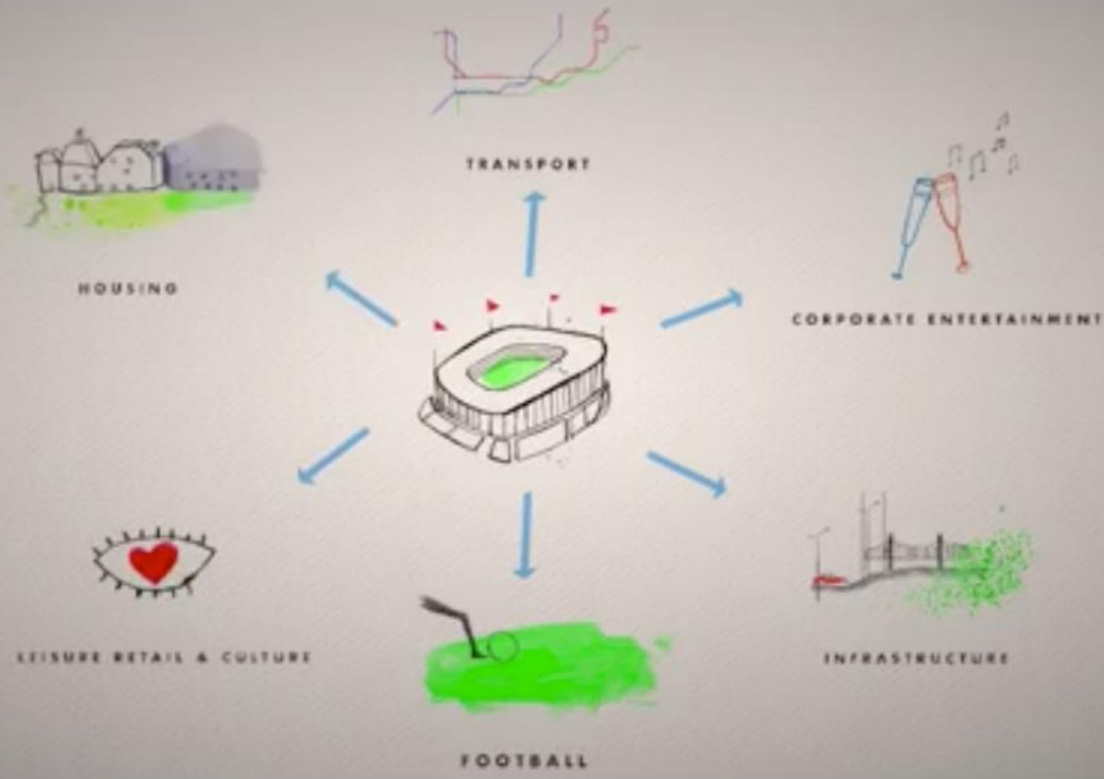


OPDC
OLD OAK AND
PARK ROYAL
DEVELOPMENT
CORPORATION
MAYOR OF LONDON

▶ ⏪ 🔊 2:18 / 3:30



OLD OAK COMMON: THE CHOICE



#keepwestLondonRs



▶ 1:39 / 3:28



(Source: A new stadium in the heart of the local community, <https://www.youtube.com/watch?v=cXRtFOyKmhW> , uploaded on 15 Jan 2016)



CORRIDORS OF FREEDOM

JOHANNESBURG

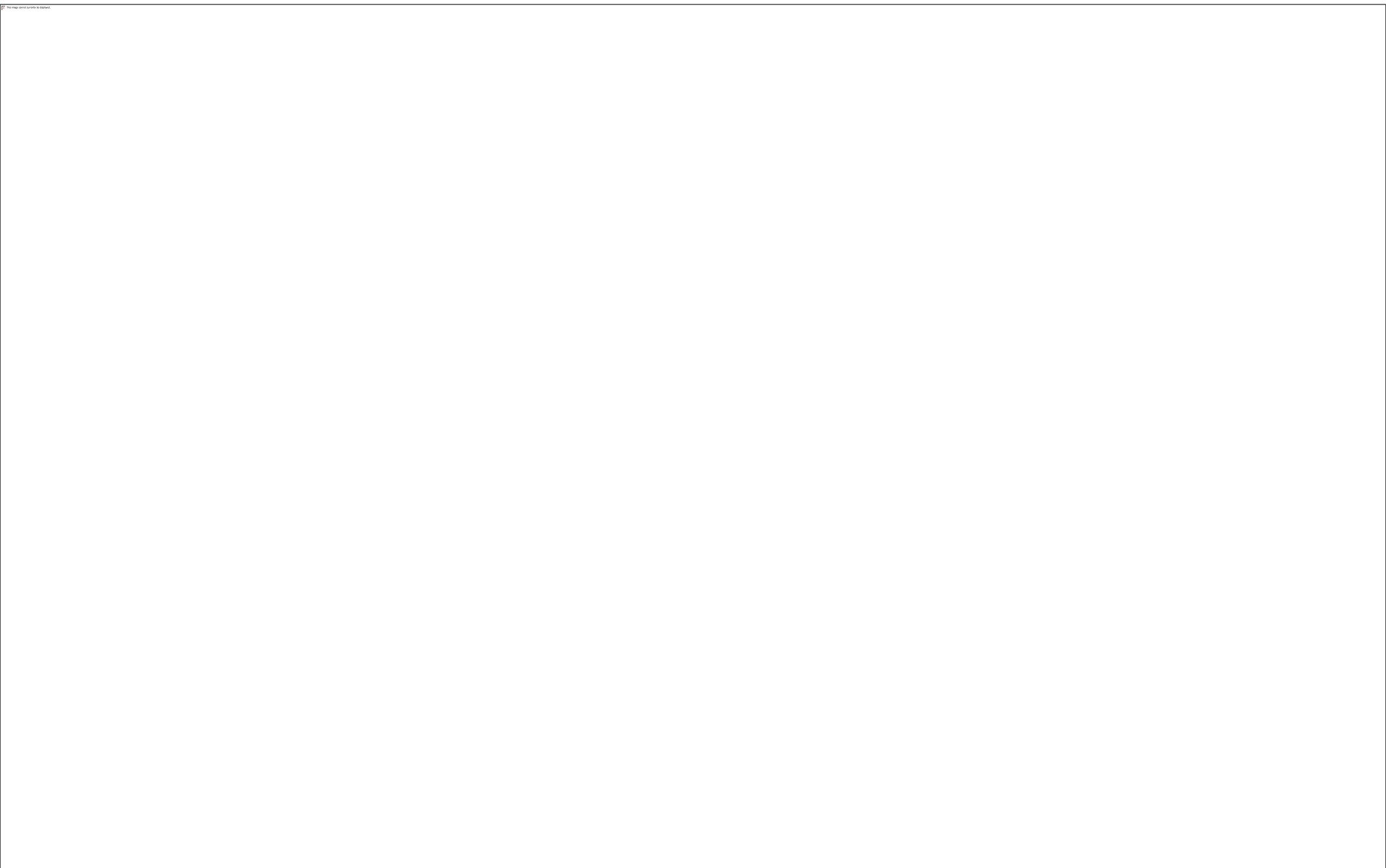
Corridors of Freedom



▶ ⏪ 🔊 1:26 / 10:21



(Source: Corridors of freedom, www.youtube.com/watch?v=MPvnFMpo18g, uploaded on 12 August 2015)



(Source: Corridors of freedom, www.youtube.com/watch?v=MPvnFMpo18g, uploaded on 12 August 2015)





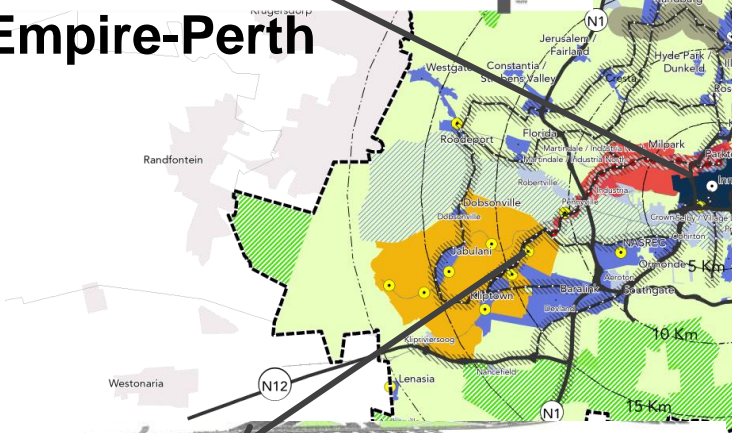
Louis Botha

Emerging Framework Concept

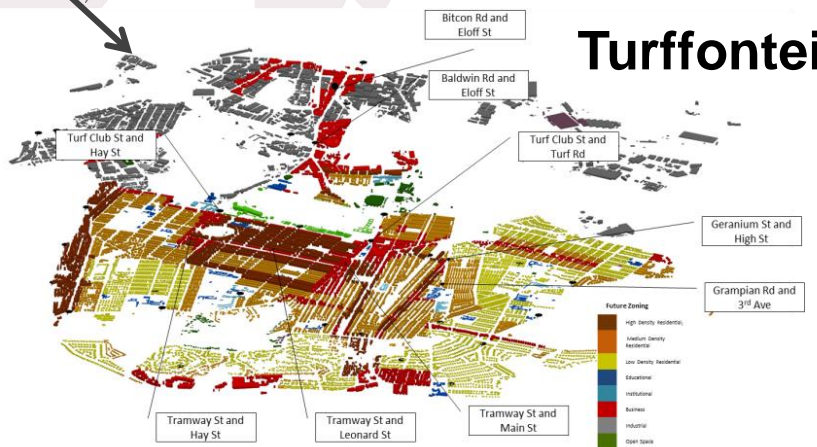
- BRT/ITN Corridors
- Randburg/Airport Corridor
- Urban Nodal Areas
- Inner City/Metropolitan Core
- Public Transport Backbone
- Opportunity Area (Modderfo)
- Opportunity Area (Mining Be)
- Consolidation Zone
- Industrial Nodes
- Areas Beyond UDB
- (Re)Urbanisation, Diversificati Economic Development
- Regional TOD Nodes (Gautrai)
- Regional TOD Nodes (PRASA)
- Local TOD Nodes (Rea Vaya)



Empire-Perth



Turffontein



[? What we do >](#)[📍 In my area >](#)[📍 Get involve >](#)[i About us >](#)[▶ Media cent >](#)[i Publication >](#)

Old Oak & Park Royal land

OPDC's exciting news regarding land in Old Oak and Park Royal.



What's the deal?

OPDC is set to become the lead master developer for Old Oak and Park Royal in west London.



What land and how much?

Selected government-owned land has been agreed in principle to be transferred to OPDC.



Impact of land transfer

What will this agreement to transfer land mean for the area?



OPDC's landowner role

OPDC has started the procurement process to appoint an ambitious and experienced team to prepare the masterplan.



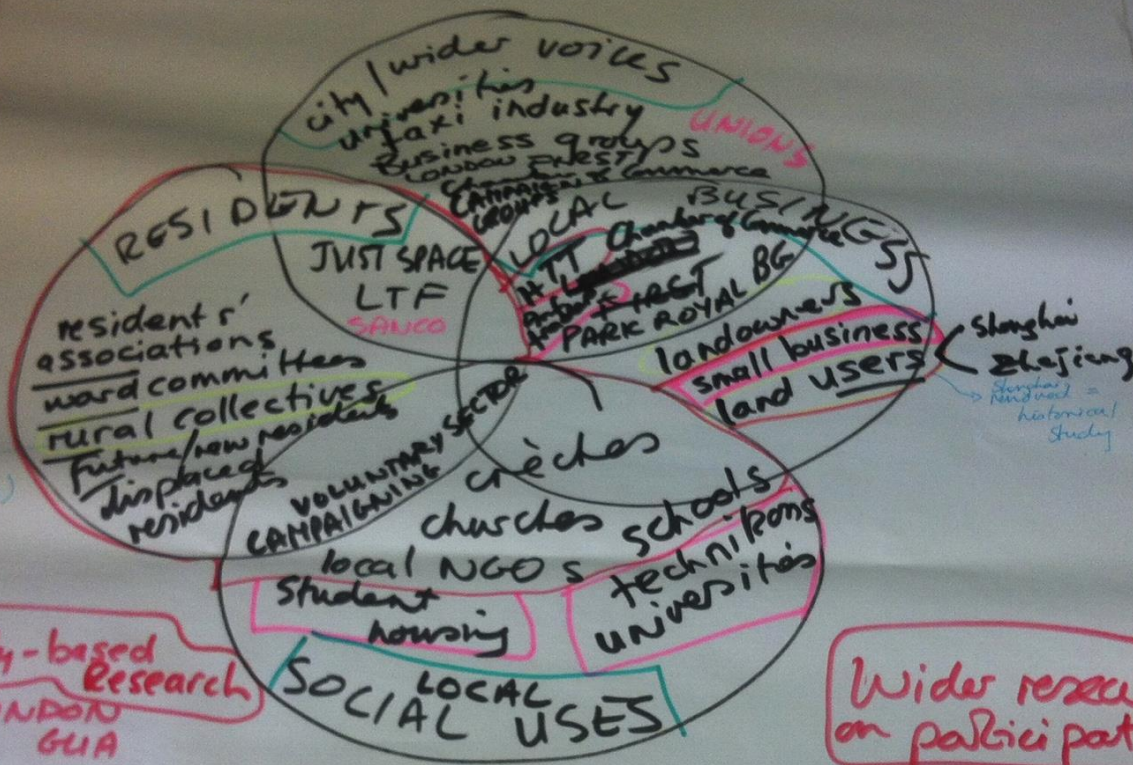
What are the benefits?

We've outlined what the key benefits are to transferring central Government land holdings to OPDC will be.



h5 AFTER 5 YEARS CONSULTATION
NO compensation
NO reassurance
NO answers

I ❤️ h5



Community-based Research
 — LONDON GUA

— JOBURG

— SHANGHAI

Wider research on participation

GOVT

"PARTICIPANTS"
 (OTHER)

DEVELOPERS
 + CONSULTANTS